



Your source for industrial switchgear

Power Maxx-PMX-PMX-R Switchboards

Arrives at your job site within 3-5 business days
Free shipping anywhere in the United States



SIEMENS Certified OEM

POWER MAXX

PMX-PMX-R Switchboards

Power Maxx-PMX Switchboards are a fully merchandised, ready-to-install solution engineered for service-entrance applications requiring EUSERC-compliant utility metering up to 4000A, 240V AC 3Ø-3W, 208Y/120V AC 3Ø-4W, 240/120V AC 3Ø-4W DELTA, 480V AC 3Ø-3W, 480Y/277V AC 3Ø-4W. Units are available in both NEMA 1 and NEMA 3R construction for dependable performance in a wide range of environments.

Rapid Availability

Power Maxx-PMX is stocked and merchandised through authorized DEI Power Solutions distribution partners, ensuring fast turnaround and consistent product availability for demanding project timelines. Free shipping anywhere in the United States with delivery to your job site within 3-5 business days.

Commercial Metering / Multi Tenant Metering

Our standard designs can accommodate 3 or 6 meters per section. All switchboards are offered with copper or aluminum supply buses in 1000-4000 amp. Available in 200A or 320A dual mounted meter sockets



Utility Compliant

The metering compartment is factory-configured to meet EUSERC hot-sequence requirements, ensuring a smooth approval process with utilities.

Standards & Compliance

- UL 891
- NEMA PB2
- UL Listed
- EUSERC compliant

Applications

- Commercial
- Data centers
- Crypto mining
- Refineries
- Hospitals
- Industrial
- Retail
- Manufacturing plants

Service Section Selection

System	Service Voltage (V)	Main Ratings (A)	Main Breaker Trip Unit	SCCR		Catalog Number
				240 V	480 V	Available in NEMA 1 or NEMA 3R
1Ø3W	120/240	1000	Thermal Mag	65k AIC	-	PMX1000
		1200	Thermal Mag			PMX1200
		1600	Thermal Mag			PMX1600
3Ø4W[1]	240V AC 208Y/120V AC 240/120V AC DELTA 480V AC 480Y/277V AC 415/240V	2000	Thermal Mag	65k AIC	65k AIC	PMX2000
		2500	Thermal Mag	65k AIC	65k AIC	PMX2500
		3000	Thermal Mag	65k AIC	65k AIC	PMX3000
		4000	Thermal Mag	65k AIC	65k AIC	PMX4000

Meter Doors Available in 15-inch and 30-inch

Meter Socket Jaws	Catalog Number	
	15-inch high door with one meter socket and test block	30-inch high door with two meter sockets and test blocks
6	DP15MD6J	DP30MD6J
13	DP15MD13J	DP30MD13J
15	DP15MD15J	DP30MD15J
Blank	DP15MDBC	-
Provision	DP15MDMS	-

Accessories

Description	
PAC3120 Power Metering Description goes here	Ground Fault Protection Description goes here
Surge Protection Device (SPD) Description goes here	Arc Flash Reduction Description goes here
Branch Circuit Monitoring System (BCMS) Description goes here	

For factory assistance, renewal parts or 24/7 emergency service in the United States or Canada call (866) 773-8050

Power Maxx-PMX-R Switchboard



CERTIFICATIONS	UL 891
COMPLIANCES	Compliance with all utility companies and meets EUSERC standards
ACCESSORIES INCLUDE	<p>PAC3120 Power Metering</p> <p>Surge Protection Device (SPD)</p> <p>Branch Circuit Monitoring System (BCMS)</p> <p>Ground Fault Protection</p> <p>Arc Flash Reduction</p>

- Power Maxx-PMX-R main breaker with distribution available in 1000A, 1200A, 1600A, 2000A, 2500A, 3000A, 4000A.
- This series is available with no lead time available in 3-5 business days anywhere in the united states
- Switchboards supplied with 18 circuit distribution for up to 4000A branch breakers
- Meter doors available in 15" (single socket) or 30" (dual sockets), both with test blocks.
- Meter sockets offered in 6-, 8-, 13-, or 15-jaw designs with test blocks.

Power Maxx-PMX Switchboard



CERTIFICATIONS UL 891

COMPLIANCES Compliance with all utility companies and meets EUSERC standards

ACCESSORIES INCLUDE PAC3120 Power Metering

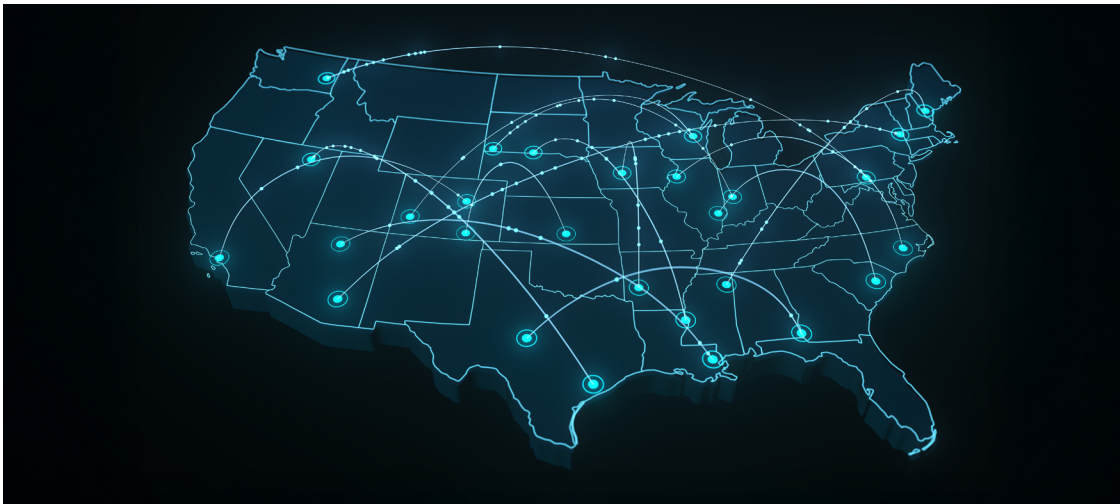
Surge Protection Device (SPD)

Branch Circuit Monitoring System (BCMS)

Ground Fault Protection

Arc Flash Reduction

- Power Maxx-PMX main breaker with distribution available in 1000A, 1200A, 1600A, 2000A, 2500A, 3000A, 4000A.
- This series is available with no lead time available in 3-5 business days anywhere in the united states
- Switchboards supplied with 18 circuit distribution for up to 4000A branch breakers
- Meter doors available in 15" (single socket) or 30" (dual sockets), both with test blocks.
- Meter sockets offered in 6-, 8-, 13-, or 15-jaw designs with test blocks.



Arrives at your job site within 3-5 business days
Free shipping anywhere in the United States

**Hawaii, Puerto Rico and Guam not covered for rapid delivery*

Shipping & Lead Times

We provide free shipping on all orders with typical delivery within 3–5 business days. Our streamlined production and fulfillment process ensures fast turnaround times, helping contractors and facilities receive critical electrical equipment without unnecessary delays.

Warranty Information

All products include a 1-year warranty covering electrical components and a 2-year warranty covering structure, labor, and bussing. Each unit is carefully assembled and tested to ensure long-term reliability and dependable performance in demanding electrical applications.

In Full Accordance With All Applicable Codes and Regulatory Requirements

Core Codes & Regulatory Bodies

NFPA — National Fire Protection Association

NEC (NFPA 70) — National Electrical Code

NFPA 70E — Electrical Safety in the Workplace

Utility & Infrastructure Standards

NESC (ANSI C2) — National Electrical Safety Code

Product Standards & Certifications

UL — Underwriters Laboratories

NEMA — National Electrical Manufacturers Association

ANSI — American National Standards Institute

IEEE — Institute of Electrical and Electronics Engineers

Industry Associations

NECA — National Electrical Contractors Association

1. The service entrance switchboard delivers dependable main overcurrent protection and integrated distribution in a compact, single-unit design. Built for medium-duty service applications, it features high-quality molded-case circuit breakers with series-rated combinations available to meet a wide range of service needs.
2. Rigorously tested to verify NEMA 3R performance standards, these enclosures undergo inspection, fit-up, and weather-resistance checks. We document results in-house, ensuring consistent quality before shipment, helping you deploy equipment confidently in outdoor applications without delays.
3. Each switchboard is constructed using top-grade, code-gauge steel for superior durability and long-term reliability. A copper bus system comes standard, providing excellent conductivity, reduced energy loss, and strong performance under load. Enclosures are available in NEMA Type 1 indoor or Type 3R outdoor configurations and finished in ANSI-61 light gray for a clean, professional appearance.
4. Proudly designed, manufactured & assembled in the USA. American craftsmanship. Industrial strength.



Buy America, Build America Compliant (B.A.B.A.)

DEI Power Inc. is Build America, Buy America (BABA) compliant, supporting federally funded projects that require U.S.-manufactured products and domestic iron and steel. We help simplify compliant sourcing with documentation-ready procurement and reliable lead times.



Buy American Act Compliant (B.A.A.)

DEI Power is Buy American Act (B.A.A.) compliant, supporting federally regulated and government-funded projects that require U.S. manufactured products. We simplify compliance with clear documentation, verified domestic sourcing, and reliable lead times to ensure your procurement process stays efficient and fully aligned with B.A.A. requirements.



Type	3VA51	3VA51	3VA52	3VA53	3VA54	3VA55
Page	7-50	7-50, 7-51, 7-52	7-58, 7-59, 7-60	7-66, 7-67	7-71	7-75
Number of Poles	1	2, 3, 4	2 in 3-pole, 3, 4	2 in 3-pole, 3, 4	2 in 3-pole, 3, 4	3, 4

3VA5 molded case circuit breakers

Size	125 A	125 A	250 A	400 A	600 A	800 A
Rated current I_n	A 15 ... 125	15 ... 125	100 ... 250	200 ... 400	400 ... 600	600 ... 800
Frequency	Hz 0 ... 400	0 ... 400	0 ... 400	0 ... 400	0 ... 400	0 ... 400

Electrical characteristics according to UL489

Rated operational voltage 50/60 Hz AC	V 347	600	600	600	600	600
---------------------------------------	-------	-----	-----	-----	-----	-----

Electrical characteristics according to IEC 60947-2

Rated operational voltage U_e 50/60 Hz AC	V 415	690	690	690	690	690
Rated insulation voltage U_i	V 500	800	800	800	800	800
Rated impulse withstand voltage U_{imp}	kV 8	8	8	8	8	8

Short-circuit breaking capacity according to UL 489

UL Breaker Type	S	M	H	S	M	H	M	H	C	M	H	C	M	H	C	M	H	C
SEAS	MEAS	HEAS	SEAS	MEAS	HEAS	MFAS	HFAS	CFAS	MJAS	HJAS	CJAS	MLAS	HLAS	CLAS	MMAS	HMAS	CMAS	
120 V AC / 50/60 Hz	kA 65	85	150	—	—	—	—	—	—	—	—	—	—	—	—	—	—	—
240 V AC / 50/60 Hz	kA —	—	—	65	85	100	85	100	200	85	100	200	85	100	200	85	100	200
277 V AC / 50/60 Hz	kA 25	35	50	—	—	—	—	—	—	—	—	—	—	—	—	—	—	—
347 V AC / 50/60 Hz	kA 14	18	18	—	—	—	—	—	—	—	—	—	—	—	—	—	—	—
480 Y/277 V AC / 50/60 Hz	kA —	—	—	25	35	65	35	65	100	35	65	100	35	65	100	35	65	100
480 V AC / 50/60 Hz	kA —	—	—	25	35	65	35	65	100	35	65	100	35	65	100	35	65	100
600 Y/347 V AC / 50/60 Hz	kA —	—	—	14	18	25	18	25	35	18	25	35	18	25	35	18	25	50
600 V AC / 50/60 Hz	kA —	—	—	—	—	—	18	25	35	18	25	35	18	25	35	18	25	50
125 V DC	kA 14	25	30	—	—	—	—	—	—	—	—	—	—	—	—	—	—	—
250 V DC	kA —	—	—	50	85	100	50	85	100	50	85	100	50	85	100	50	85	100
500 V DC	kA —	—	—	50	85	100	50	85	100	50	85	100	50	85	100	50	85	100
600 V DC (3-pole only)	kA —	—	—	—	—	—	50	85	100	50	85	100	50	85	100	50	85	100
750 V DC	kA —	—	—	—	—	—	50	85	100	50	85	100	50	85	100	50	85	100
1000 V DC (4-pole only)	kA —	—	—	—	—	—	50	85	100	6	6	10	6	6	10	18	25	50

Short-circuit breaking capacity according to IEC 60947-2

UL Breaker Type	S	M	H	S	M	H	M	H	C	M	H	C	M	H	C	M	H	C
240 V AC / 50/60 Hz	kA 25/25	36/36	55/55	55/55	85/85	150/150	85/85	100/100	200/200	85/85	100/100	200/200	85/85	100/100	200/200	85	100	200
415 V AC / 50/60 Hz	kA 5/5	5/5	5/5	36/36	55/55	70/70	55/55	70/70	110/110	55/55	70/70	110/110	55/55	70/70	110/110	55	70	110
690 V AC / 50/60 Hz	kA —	—	—	5/5	7/5	10/5	7/7	10/10	10/10	7/7	10/10	10/10	7/7	10/10	10/10	25	35	35
125 V DC	kA 14	25	30	—	—	—	—	—	—	—	—	—	—	—	—	—	—	—
250 V DC	kA —	—	—	50	85	100	50	85	100	50	85	100	50	85	100	50	85	100
500 V DC	kA —	—	—	50	85	100	50	85	100	50	85	100	50	85	100	50	85	100
750 V DC (3-pole only)	kA —	—	—	—	—	—	50	85	100	50	85	100	50	85	100	50	85	100

— Not available

Applicable Standards:

- UL489 — Molded Case Circuit Breakers
- UL486A-UL486B — Wire connectors
- UL 489 / CSA C22.2 NO. 5-16 / NMX-J-266-ANCE-2016 — Molded Case Circuit Breakers, Molded Case Switches and Circuit Breaker Enclosures
- EN 60947-1 AMD 2 — Molded case circuit breakers
- EN 60947-2 AMD 2 2013
- EN 50581 2012 — RoHS compliant
- All 3VA breakers are HACR rated per UL

Components - 3VA UL Breakers (Molded Case Circuit Breakers)



3VA57	3VA58	3VA59	3VA61	3VA62	3VA63
7-81	7-85	7-89	7-54, 7-55	7-62, 7-63	7-68, 7-69
2, 3	3	3	3, 4	3, 4	3, 4
1200A	1600A	2000A	150 A	250 A	400 A
800, 900, 1000, 1200	1400, 1600	1800, 2000	15 ... 125	15 ... 125	100 ... 250
0 ... 400	0 ... 400	0 ... 400	50/60 Hz	50/60 Hz	50/60 Hz
600	600	600	600	600	600
690	690	690	690	690	690
800	800	800	800	800	800
8	8	8	8	8	8

M H C			M H C			M H C			M H C L E					M H C L E					M H C L E				
MNAS	HNAS	CNAS	MPAS	HPAS	CPAS	MRAS	HRAS	CRAS	MDAE	HDAE	CDAE	LDAE	EDA	MFAE	HFAE	CFAE	LFAE	EFAE	MJAE	HJAE	CJAE	LJAE	EJAE
85	100	200	85	100	200	85	100	200	100	100	200	200	—	100	100	200	200	—	100	100	200	200	—
35	65	100	35	65	100	35	65	100	35	65	100	150	200	35	65	100	150	200	35	65	100	150	200
25	35	65	25	35	65	25	35	65	18	22	35	50	100	18	22	35	50	100	18	22	35	50	100
25	35	65	25	35	65	25	35	65	18	22	35	50	100	18	22	35	50	100	18	22	35	50	100
50	85	100	50	85	100	50	85	100	—	—	—	—	—	—	—	—	—	—	—	—	—	—	—
50	85	100	50	85	100	50	85	100	—	—	—	—	—	—	—	—	—	—	—	—	—	—	—
50	85	100	50	85	100	50	85	100	—	—	—	—	—	—	—	—	—	—	—	—	—	—	—

M H C			M H C			M H C			M H C L E					M H C L E					M H C L E				
65/35	100/50	200/100	65/35	100/50	200/100	—	—	—	85/85	110/110	150/150	200/200	—	85/85	110/110	150/150	200/200	—	85/85	110/110	150/150	200/200	—
50/25	70/35	100/50	50/25	70/35	100/50	—	—	—	55/55	85/85	110/110	150/150	150/150	55/55	85/85	110/110	150/150	150/150	55/55	85/85	110/110	150/150	150/110
20/10	30/15	35/17	20/10	30/15	35/17	—	—	—	2.5/2.5	2.5/2.5	2.5/2.5	2.5/2.5	3/3	3/3	3/3	3/3	3/3	3/3	5/5	5/5	5/5	5/5	6/6
30	30	30	30	30	30	—	—	—	—	—	—	—	—	—	—	—	—	—	—	—	—	—	—

UL Type Structure	Position 1	Position 2	Position 3	Position 4
	KAIC @ 480V	Frame (max amps)	Family	Trip System / Special Application
	S = 25=low M = 35=med low H = 65=med C = 100=med high L = 150=high E = 200=extra high	E = 125A D = 150A F = 250A J = 400A L = 600A	M = 800A MN = 1000A N = 1200A P = 1600A R = 2000A	A = 3VA S = Standard TMTU or MCS (Molded Case Switch) E = High End ETU B = Panelboard TMTU (Bolt-on) M = TMTU 50°C/NAVAL (UL 489 SB) P = TMTU MCP (Motor Circuit Protector) R = ETU MCP (Motor Circuit Protector)



Type	3VA64	3VA65	3VA66	3VA67	3VA68	3VA69
Page	7-72, 7-73	7-76, 7-77	7-79, 7-80	7-82, 7-83	7-86, 7-87	7-90
Number of Poles	3, 4	3, 4	3, 4	3	3	3

3VA molded case circuit breakers

Size	600 A	800A	1000A	1200 A	1600 A	2000 A
Rated current I_n	A 200 ... 400	600-800	1000	800, 1000, 1200	1600	2000
Frequency	Hz 50/60 Hz	50/60 Hz	50/60 Hz	50/60 Hz	50/60 Hz	50/60 Hz

Electrical characteristics according to UL489

Rated operational voltage 50/60 Hz AC	V 600	600	600	600	600	600
---------------------------------------	-------	-----	-----	-----	-----	-----

Electrical characteristics according to IEC 60947-2

Rated operational voltage U_e 50/60 Hz AC	V 690	690	690	690	690	690
Rated insulation voltage U_i	V 800	800	800	800	800	800
Rated impulse withstand voltage U_{imp}	kV 8	8	8	8	8	8

Short-circuit breaking capacity according to UL 489

UL Breaker Type	M	H	C	L	E	M	H	C	M	H	C	M	H	C	M	H	C	M	H	C	
	MLAE	HLAE	CLAE	LLAE	ELAE	MMAE	HMAE	CMAE	MMNAE	HMNAE	CMNAE	MNAE	HNAE	CNAE	MPAE	HPAE	CPAE	MRAE	HRAE	CRAE	
120 V AC / 50/60 Hz	kA	—	—	—	—	—	—	—	—	—	—	—	—	—	—	—	—	—	—	—	
240 V AC / 50/60 Hz	kA	100	100	200	200	—	—	—	—	—	—	—	—	—	—	—	—	—	—	—	
277 V AC / 50/60 Hz	kA	—	—	—	—	—	—	—	—	—	—	—	—	—	—	—	—	—	—	—	
347 V AC / 50/60 Hz	kA	—	—	—	—	—	—	—	—	—	—	—	—	—	—	—	—	—	—	—	
480 Y/277 V AC / 50/60 Hz	kA	35	65	100	150	200	35	65	100	35	65	100	—	—	—	—	—	—	—	—	
480 V AC / 50/60 Hz	kA	35	65	100	150	200	35	65	100	35	65	100	35	65	100	35	65	100	35	65	100
600 Y/347 V AC / 50/60 Hz	kA	18	22	35	50	100	25	35	50	25	35	50	—	—	—	—	—	—	—	—	
600 V AC / 50/60 Hz	kA	18	22	35	50	100	25	35	50	25	35	50	25	35	65	25	35	65	25	35	65
125 V DC	kA	—	—	—	—	—	—	—	—	—	—	—	—	—	—	—	—	—	—	—	
250 V DC	kA	—	—	—	—	—	—	—	—	—	—	—	—	—	—	—	—	—	—	—	
500 V DC	kA	—	—	—	—	—	—	—	—	—	—	—	—	—	—	—	—	—	—	—	
600 V DC (3-pole only)	kA	—	—	—	—	—	—	—	—	—	—	—	—	—	—	—	—	—	—	—	
750 V DC (4-pole only)	kA	—	—	—	—	—	—	—	—	—	—	—	—	—	—	—	—	—	—	—	
1000 V DC (4-pole only)	kA	—	—	—	—	—	—	—	—	—	—	—	—	—	—	—	—	—	—	—	

Short-circuit breaking capacity according to IEC 60947-2

	M	H	C	L	E	M	H	C	M	H	C	M	H	C	M	H	C	M	H	C	
Rated ultimate short-circuit breaking capacity I_{cu}																					
Rated service short-circuit breaking capacity I_{cs}																					
rms value, according to IEC 60947-2																					
240 V AC / 50/60 Hz	kA	85/85	110/110	150/150	200/200	—	85/85	110/110	200/150	85/85	110/110	200/150	65/35	100/50	200/100	65/35	100/50	200/100	—	—	—
415 V AC / 50/60 Hz	kA	55/55	85/85	110/110	150/150	150/110	55/55	85/85	110/85	55/55	85/85	110/85	50/25	70/35	100/50	50/25	70/35	100/50	—	—	—
690 V AC / 50/60 Hz	kA	6/6	6/6	6/6	6/6	6/6	25/19	35/19	35/19	25/19	35/19	35/19	20/10	30/15	35/17	20/10	30/15	35/17	—	—	—
125 V DC	kA	—	—	—	—	—	—	—	—	—	—	—	—	—	—	—	—	—	—	—	
250 V DC	kA	—	—	—	—	—	—	—	—	—	—	—	—	—	—	—	—	—	—	—	
500 V DC	kA	—	—	—	—	—	—	—	—	—	—	—	—	—	—	—	—	—	—	—	
750 V DC (3-pole only)	kA	—	—	—	—	—	—	—	—	—	—	—	—	—	—	—	—	—	—	—	
— Not available																					

Fixed-Mount Breaker Front Bus Connectors

To convert the 3WA breakers primary connections to comply with standard NEMA bussing and bolt hole patterns, use the Front Buss connectors. The kit includes the required bus connections and hardware for mounting one 3-pole set of adapters to a breaker.

Caution:

Front connectors cannot be used with top mounted internal voltage taps.

3WA2

Front Connection, fixed-mount breaker 3WA2				
Frame Size	Breaking Class	Rated Current	Catalog No.	Note
1	N, S	800-1200	3WA9111-1AF10	1 piece, top mounting
1	N, S	800-1200	3WA9111-1AG10	1 piece, bottom mounting
1	N, S	1600	3WA9111-1AF11	1 piece, top mounting
1	N, S	1600	3WA9111-1AG11	1 piece, bottom mounting
2	S, H, E	800-1600	3WA9111-1AF20	1 piece, top mounting
2	S, H, E	800-1600	3WA9111-1AG20	1 piece, bottom mounting
2	S, H, E	2000	3WA9111-1AF21	1 piece, top mounting
2	S, H, E	2000	3WA9111-1AG21	1 piece, bottom mounting
2	S, H, E	2500	3WA9111-1AF22	1 piece, top mounting
2	S, H, E	2500	3WA9111-1AG22	1 piece, bottom mounting
2	S, H, E	3000	3WA9111-1AF23	1 piece, top mounting
2	S, H, E	3000	3WA9111-1AG23	1 piece, bottom mounting
3	H, E	4000-5000 ¹⁾	3WA9111-1AF31	1 piece, top mounting
3	H, E	4000-5000 ¹⁾	3WA9111-1AG1	1 piece, bottom mounting incl. supporting bracket

Caution:

Front connectors cannot be used with top mounted internal voltage taps.

3WA3

Front Connection, fixed-mount breaker 3WA3				
Frame Size	Breaking Class	Rated Current	Catalog No.	Note
1	N, S	800-1200	3WA9111-1AF10	1 piece, top mounting
1	N, S	800-1200	3WA9111-1AG10	1 piece, bottom mounting
1	N, S	1600	3WA9111-1AF11	1 piece, top mounting
1	N, S	1600	3WA9111-1AG11	1 piece, bottom mounting
2	N, S, M, H, E	800-1600	3WA9111-1AF20	1 piece, top mounting
2	N, S, M, H, E	800-1600	3WA9111-1AG20	1 piece, bottom mounting
2	N, S, M, H, E	2000	3WA9111-1AF21	1 piece, top mounting
2	N, S, M, H, E	2000	3WA9111-1AG21	1 piece, bottom mounting
2	N, S, M, H, E	2500	3WA9111-1AF23	1 piece, top mounting
2	N, S, M, H, E	2500	3WA9111-1AG23	1 piece, bottom mounting
3	M, H, E	4000-5000 ¹⁾	3WA9111-1AF31	1 piece, top mounting
3	M, H, E	4000-5000 ¹⁾	3WA9111-1AG31	1 piece, bottom mounting

¹⁾ Only mountable on 5000A breakers

Cradle Rear Wall T-Connectors

3WA2

Cradle Rear Wall T-Connector 3WA2					
Description	Frame Size	Poles	Breaking Class	Rated Current	Catalog No.
	1	3-Pole	N, S	800-1200A	3WA9111-1AM40
	1		N, S	1600A	3WA9111-1AM41
	1		N, S	2000A	3WA9111-1AM42
	2		S	800-1600A	3WA9111-1AM50
	2		S	2000A	3WA9111-1AM51

3WA3

Cradle Rear Wall T-Connector 3WA3					
Description	Frame Size	Poles	Breaking Class	Rated Current	Catalog No.
	1	3-Pole	N, S	800-1200A	3WA9111-1AM40
	1		N, S	1600A	3WA9111-1AM41
	2		N, S, M	2000A	3WA9111-1AM51
	2		N, S	800-1200A	3WA9111-1AM40
	1	4-Pole	N, S	800-1200A	3WA9111-1AN20
	1		N, S	1600A	3WA9111-1AN21
	2		N, S, M	800-1600A	3WA9111-1AN50
	2		N, S, M	2000A	3WA9111-1AN51

Spare Parts

Replacement Electronic Trip Units

The brains of the circuit breaker, the electronic trip units govern the available protective functions for a system. Choose the ETU which best suits your specifications. For more information, please see the trip section or for a deep dive be sure to read our Smart Circuit Breaker Guide. All ETUs can be replaced/ins in the field.



Ordering Info	
Description	Catalog No.
Electronic Trip Unit ETU300 LSI / LSIG	3WA9111-0EE32
Electronic Trip Unit ETU600 LSI / LSIG	3WA9111-0EE62
Electronic Trip Unit ETU600 LSIG Hi-Z	3WA9111-0EE63

Replacement Battery

The replacement battery offers a simple field installation to ensure that the real-time clock in the ETU6 remains powered in the absence of control power.



Ordering Info	
Description	Catalog No.
For use with ETU600	3WA9111-0EE81

Isolation Shutters

Shutters are included as standard with all 3WA cradles, unless otherwise specified. For the safety of operators, isolation shutters reduce accessibility to the primary terminals in the guide frame by automatically closing when the breaker is disconnected or withdrawn. To increase the level of control, the shutters can also be padlocked to eliminate the opening of the shutter when the breaker is not in the compartment.

3WA2

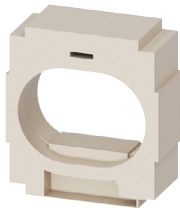
Shutters, 3WA2					
Description	Frame Size	Poles	Breaking Class	Rated Current	Catalog No.
Shutter	1	3-pole	N, S, H, E	800-2000A	3WA9111-1AP10
Shutter	2		S, H, E	800-3000A	3WA9111-1AP20
Shutter	2		C	800-3000A	3WA9111-1AP22
Shutter	3		H, E	4000-5000A	3WA9111-1AP30
Shutter	3		C	4000-5000A	3WA9111-1AP32

3WA3

Shutters 3WA3					
Description	Frame Size	Poles	Breaking Class	Rated Current	Catalog No.
Shutter	1	3-Pole	N, S, E	800-2000A	3WA9111-1AP10
Shutter	2		N, S, M, H, E	800-3200A	3WA9111-1AP20
Shutter	3		M, H, E	4000-5000A	3WA9111-1AP30
Shutter	3		C	3200-5000A	3WA9111-1AP32
Shutter	1	4-Pole	N, S, E	800-2000A	3WA9111-1AP11
Shutter	2		N, S, M, H, E	800-3200A	3WA9111-1AP21
Shutter	3		M, H, E	4000-5000A	3WA9111-1AP31

Internal Current Sensors

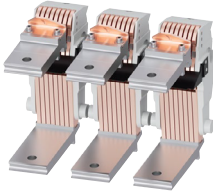
If the need arises to replace the internal CTs for the 3WA, please see below for direct replacements containing all hardware needed.



Ordering Information		
Description	Frame Size	Catalog No.
All parts, 3-pole	1	3WA9111-0AA42
	2	3WA9111-0AA43
	3	3WA9111-0AA44
All parts, 4-pole	1	3WA9111-0AA45
	2	3WA9111-0AA46
	3	3WA9111-0AA47

Contact Systems

For UL1066 breakers it is possible to replace the contacts if they have seen significant wear.



Ordering Info				
Breaker	Frame Size	Breaking Class	Rated Current	Catalog No.
3WA2	1	N	800-1200A	3WA9111-1AQ30
	1	N	1600A	3WA9111-1AQ31
	1	S	800-1600A	3WA9111-1AQ31
	1	N, S	2000A	3WA9111-1AQ32
	1	H, E	800-2000A	3WA9111-1AQ33
	2	S, H, E	800 - 1600A	3WA9111-1AQ40
	2	S, H, E	2000A	3WA9111-1AQ41
	2	S, H, E	2500-3000A	3WA9111-1AQ43
	2	C	800-3000A	3WA9111-1AQ44
	3	H, E	4000A	3WA9111-1AQ50
	3	H, E	5000A	3WA9111-1AQ51
	3	C	4000-5000A	3WA9111-1AQ52
3WA3 3-pole	1	N	800-1200A	3WA9111-1AQ30
	1	N	1600A	3WA9111-1AQ31
	1	S	800-1600A	3WA9111-1AQ31
	1	N, S	2000A	3WA9111-1AQ32
	2	N, S, M, H, E	800-1600A	3WA9111-1AQ40
	2	N, S, M, H, E	2000A	3WA9111-1AQ41
	2	N, S, M, H, E	2500 - 3200A	3WA9111-1AQ43
	3	M, H, E	4000A	3WA9111-1AQ50
3	M, H, E	5000A	3WA9111-1AQ51	
3WA3 4-pole	1	N	800-1200A	3WA9111-1AQ60
	1	N	1600A	3WA9111-1AQ61
	1	S	800-1600A	3WA9111-1AQ61
	1	N, S	2000A	3WA9111-1AQ62
	2	N, S, M, H, E	800-1600A	3WA9111-1AQ70
	2	N, S, M, H, E	2000A	3WA9111-1AQ71
	2	N, S, M, H, E	2500 - 3200A	3WA9111-1AQ72
	3	M, H, E	4000A	3WA9111-1AQ80
	3	M, H, E	5000A	3WA9111-1AQ81

Arc Chutes

The Arc Chutes of a UL1066 breaker are field replaceable.



Arc Chute, 3WA2

Frame Size	Breaking Class	Rated Current	Catalog No.
1	N, S, H	800 - 2000A	3WA9111-1AS00
1	E	800 - 2000A	3WA9111-1AS01*
1	E	800 - 2000A	3WA9111-1AS02**
2	S, H	800-3000A	3WA9111-1AS10
2	E, C	800-3000A	3WA9111-1AS11
3	H	4000-5000A	3WA9111-1AS20
3	E, C	4000-5000A	3WA9111-1AS21



Arc Chute, 3WA3

Frame Size	Breaking Class	Rated Current	Catalog No.
1	N, S	800-2000A	3WA9111-1AS00
1	E	800-2000A	3WA9111-1AS01*
1	E	800-2000A	3WA9111-1AS02**
2	N, S, M	800-3200A	3WA9111-1AS10
2	H, E	800-3200A	3WA9111-1AS11
3	M, H	4000-5000A	3WA9111-1AS20
3	E, C	4000-5000A	3WA9111-1AS21

WL to WA Accessories Cross-Reference Table

3WL Catalog Number	3WL9 Description	3WA Catalog Number	3WA9 description
Secondary disconnected terminal			
3WL9111-0AB01-0AA0	Male connector for circuit breakers	3WA9111-0AB01	Base Part
3WL9111-0AB02-0AA0	1000V Extention	3WA9111-0AB02	1000V Extension
3WL9111-0AB10-0AA0	1000V Male connector extention	3WA9111-0AB01	Base Part
		3WA9111-0AB02	1000V Extension
3WL9111-0AB03-0AA0	Screw connection	3WA9111-0AB03	Screw connection
3WL9111-0AB04-0AA0	Screwless connection	3WA9111-0AB04	Push-in connection
3WL9111-0AB05-0AA0	Ring lug adapter	3WA9111-0AB05	Ring lug adapter
3WL9111-0AB07-0AA0	Coding Kit	3WA9111-0AB07	Coding Kit
3WL9111-0AB08-0AA0	sliding contact module	3WA9111-0AB08	sliding contact module
3WL9111-0AB12-0AA0	Blanking block	3WA9111-0AB12	Blanking block
Operating mechanism (motor operator)			
3WL9111-0AF01-0AA0	24 - 30Vdc motorized operating mechanism	3WA9111-0AF02	24 - 30Vdc motorized operating mechanism
3WL9111-0AF02-0AA0	48 - 60Vdc motorized operating mechanism	3WA9111-0AF04	48 - 60Vdc motorized operating mechanism
3WL9111-0AF03-0AA0	110 - 125Vdc / 110 - 127Vac motorized operating mechanism	3WA9111-0AF05	110 - 125Vdc / 110 - 127Vac motorized operating mechanism
3WL9111-0AF04-0AA0	220 - 240Vdc / 208 - 240Vac motorized operating mechanism	3WA9111-0AF06	220 - 250Vdc / 208 - 240Vac motorized operating mechanism
Undervoltage release instantaneous			
3WL9111-0AE01-0AA0	24Vdc Undervoltage release instantaneous	3WA9111-0AE02	24 - 30Vdc Undervoltage release instantaneous
3WL9111-0AE02-0AA0	30Vdc Undervoltage release instantaneous		
3WL9111-0AE03-0AA0	48Vdc Undervoltage release instantaneous	3WA9111-0AE04	48 - 60Vdc Undervoltage release instantaneous
3WL9111-0AE07-0AA0	60Vdc Undervoltage release instantaneous		
3WL9111-0AE04-0AA0	110 - 125Vdc / 110 - 127Vac Undervoltage release instantaneous	3WA9111-0AE05	110 - 125Vdc / 110 - 127Vac Undervoltage release instantaneous
3WL9111-0AE05-0AA0	220 - 250Vdc / 208 - 240Vac Undervoltage release instantaneous	3WA9111-0AE06	220 - 250Vdc / 208 - 240Vac Undervoltage release instantaneous
3WL9111-0AE06-0AA0	380 - 415Vac Undervoltage release instantaneous	3WA9111-0AE07	380 - 415Vac Undervoltage release instantaneous
Undervoltage release delayed			
3WL9111-0AE11-0AA0	48Vdc Undervoltage release delayed	3WA9111-0AE13	48Vdc Undervoltage release delayed
3WL9111-0AE12-0AA0	110 - 125Vdc / 110 - 127Vac Undervoltage release delayed	3WA9111-0AE15	110 - 125Vdc / 110 - 127Vac Undervoltage release delayed
3WL9111-0AE13-0AA0	220 - 250Vdc / 208 - 240Vac Undervoltage release delayed	3WA9111-0AE16	220 - 250Vdc / 208 - 240Vac Undervoltage release delayed
3WL9111-0AE14-0AA0	380 - 415Vac Undervoltage release delayed	3WA9111-0AE17	380 - 415Vac Undervoltage release delayed
Remote trip alarm reset coils			
3WL9111-0AK03-0AA0	24Vdc Remote trip alarm reset coil	3WA9111-0EM42	24 - 30Vdc Remote trip alarm reset coil
3WL9111-0AK04-0AA0	48Vdc Remote trip alarm reset coil	3WA9111-0EM44	48 - 60Vdc Remote trip alarm reset coil
3WL9111-0AK05-0AA0	125Vdc/120Vac Remote trip alarm reset coil	3WA9111-0EM45	110 - 125Vdc/120 - 127Vac Remote trip alarm reset coil
3WL9111-0AK06-0AA0	220V-250Vdc / 208 - 240Vac Remote trip alarm reset coil	3WA9111-0EM46	220V-250Vdc / 208 - 240Vac Remote trip alarm reset coil

(continued)

3WA Power Circuit Breaker - Selection & Application Guide

WL to WA Accessories Cross-Reference Table (continued)

3WL Catalog Number	3WL9 Description	3WA Catalog Number	3WA9 description
Closing coils / shunt trips 100% OP			
3WL9111-0AD01-0AA0	24Vdc Closing coil / shunt trip 100% OP	3WA9111-0AD02	24 - 30Vdc Closing coil / shunt trip 100% OP
3WL9111-0AD02-0AA0	30Vdc Closing coil / shunt trip 100% OP		
3WL9111-0AD03-0AA0	48Vdc Closing coil / shunt trip 100% OP	3WA9111-0AD04	48 - 60Vdc Closing coil / shunt trip 100% OP
3WL9111-0AD04-0AA0	60Vdc Closing coil / shunt trip 100% OP		
3WL9111-0AD05-0AA0	110 - 125Vdc /100 - 127Vac Closing coil / shunt trip 100% OP	3WA9111-0AD05	110 - 125Vdc /100 - 127Vac Closing coil / shunt trip 100% OP
3WL9111-0AD06-0AA0	220 - 250Vdc /208 - 240Vac Closing coil / shunt trip 100% OP	3WA9111-0AD06	220 - 250Vdc /208 - 240Vac Closing coil / shunt trip 100% OP
Closing coil 5% OP			
3WL9111-0AD11-0AA0	24Vdc Closing coil 5% OP	3WA9111-0AD12	24 - 30Vdc Closing coil 5% OP + S15 cut-off switch
3WL9111-0AD12-0AA0	48Vdc Closing coil 5% OP	3WA9111-0AD14	48 - 60Vdc Closing coil 5% OP + S15 cut-off switch
3WL9111-0AD13-0AA0	110 - 125Vdc /100 - 127Vac 5% Closing coil 5% OP	3WA9111-0AD15	110 - 125Vdc /100 - 127Vac 5% Closing coil 5% OP + S15 cut-off switch
3WL9111-0AD14-0AA0	220 - 250Vdc /208 - 240Vac 5% Closing coil 5% OP	3WA9111-0AD16	220 - 250Vdc /208 - 240Vac 5% Closing coil / shunt trip 5% OP + S15 cut-off switch
Shunt trips 5% OP			
3WL9111-1AD11-0AA0	24Vdc Shunt trip 5% OP	3WA9111-0AD22	24 - 30Vdc shunt trip 5% OP + S14 cut-off switch
3WL9111-1AD12-0AA0	48Vdc Shunt trip 5% OP	3WA9111-0AD24	48 - 60Vdc shunt trip 5% OP + S14 cut-off switch
3WL9111-1AD13-0AA0	110 - 125Vdc /100 - 127Vac 5% Shunt trip 5% OP	3WA9111-0AD25	110 - 125Vdc /100 - 127Vac 5% shunt trip 5% OP + S14 cut-off switch
3WL9111-1AD14-0AA0	220 - 250Vdc /208 - 240Vac 5% Shunt trip 5% OP	3WA9111-0AD26	220 - 250Vdc /208 - 240Vac 5% shunt trip 5% OP + S14 cut-off switch

Z Options

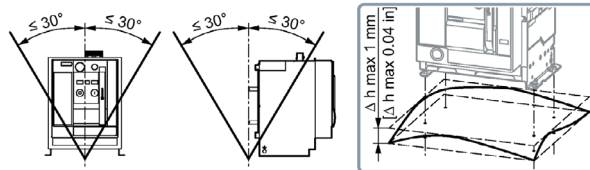
Z Option	Description	Spare Part MLFB
B02	Option Plug with Rated Current 250 A	
B03	Option Plug with Rated Current 315 A	
B04	Option Plug with Rated Current 400 A	
B05	Option Plug with Rated Current 500 A	
B06	Option Plug with Rated Current 630 A	
B07	Option Plug with Rated Current 700 A	
B08	Option Plug with Rated Current 800 A	
B10	Option Plug with Rated Current 1000 A	
B11	Option Plug with Rated Current 1200 A	
B12	Option Plug with Rated Current 1250 A	
B16	Option Plug with Rated Current 1600 A	
B20	Option Plug with Rated Current 2000 A	
B25	Option Plug with Rated Current 2500 A	
B30	Option Plug with Rated Current 3000 A	
B32	Option Plug with Rated Current 3200 A	
B40	Option Plug with Rated Current 4000 A	
B50	Option Plug with Rated Current 5000 A	
B60	Option Plug with Rated Current 6000 A	
B71	Option Plug with Rated Current 225 A	
B72	Option Plug with Rated Current 200 A	
B73	Option Plug with Rated Current 300 A	
B74	Option Plug with Rated Current 350 A	
B75	Option Plug with Rated Current 450 A	
B76	Option Plug with Rated Current 600 A	
C01	Operations counter	
C11	Local electric close, with sealing cover	3WA9111-0AH21
C12	Local electric close, with CES lock	3WA9111-0AH22
C24	Motor disconnect switch	3WA9111-0AH24
C25	Emergency OPEN button, mushroom pushbutton	3WA9111-0AH25
D03	3WA3 Breaker with IEC main connections	
D05	3WA circuit breaker without push-in-aux.-plugs	
D08	Tin surface for main connections for guide frame, only for horizontal or flange connection	
D09	4000A 3WA with connections that match 4000A WL breaker	
D24	Circuit breaker frame size 3 in fixed mounted design with glued screws for breaker feet and lateral front covers	
D80	Circuit breaker without bluetooth functionality	
F15	Modbus-RTU module COM150	3WA9111-2EC15
F17	PROFIBUS-DP module COM170	3WA9111-0EC14
F19	PROFINET-IO/Modbus-TCP module COM190	3WA9111-2EC13
F20	Zone Selective Interlocking module ZSI200	3WA9111-0EC10
F23	Digital Input/Output module IOM230	3WA9111-2EC11
F40	Cover for Electronic Trip Unit	
F41	EMC Filter for Electronic Trip Unit	3WA9111-0EM51

(continued)

Technical Tables (cont'd.)

3WA2 (UL489) Frame Ratings - Frame Size 3		4000A			5000A		
Rating Class		H	E	C	H	E	C
Minimum enclosure dimension (in.)		22.5 H / 32 W / 19.5 D			22.5 H / 32 W / 19.5 D		
required ventilation openings per UL489	top (sq-in)	60 (30" x 2")			60 (30" x 2")		
	bottom (sq-in)	65			68		
Mechanical make-time (ms)		35			35		
Mechanical break-time (ms)		34			34		
Electric close make-time (ms) through closing coil / (Intermittent duty)		80 / 50 ¹⁾			80 / 50 ¹⁾		
Electric Trip shunt trip break time (ms) / (Intermittent duty)		80 / 50 ²⁾			80 / 50 ²⁾		
Electric trip/ UV break-time (ms)		803) / 200 ⁴⁾			803) / 200 ⁴⁾		
Electric trip trough electronic trip unit (ms)		50			50		
Weights , 3-pole (with vertical main connections)							
Circuit breaker fixed mounted	kg / lb	137 / 301.4			159 / 349.8		
Circuit breaker fixed withdrawable w/o cradle (guide frame)	kg / lb	116.5 / 256.3			138.5 / 304.7		
Cradle (guide frame)	kg	113.5 / 249.7			121.5 / 267.3		
Rated impulse withstand voltage Vimp / kV							
Main circuits					12		
Auxiliary circuits					4		
Control circuits ⁶⁾					2.5		
Dielectric Withstand – Primary Circuit		2.2	3.2	2.2	2.2	3.2	2.2
Dielectric Withstand – Control Circuits					1.0		
Permissible ambient temperature °C							
Storage					-40 to +80 ⁷⁾		

Mounting Position



- 1) electrical closing time with closing coil 5% OP
- 2) with shunt trip 5% OP
- 3) with instantaneous under voltage release
- 4) with short time delayed under voltage release
- 5) when used according UL489 Annex 5B "Naval": up to +50°C
- 6) spring charging motor 1.5kV
- 7) Storage should be in a non-condensing environment

ETU600 electronic trip unit

Operation, interfaces and metering function

		Current metering	ready4COM	PMF-I Energy efficiency	PMF-II Basic Power Monitoring	PMF-III Advanced Power Monitoring	Non-automatic circuit breakers
Operation and interfaces							
Rotary switch							
Display and operating keys							
SENTRON Powerconfig configuration software							-
Fieldbus communication							-
Color display							-
Bluetooth and USB interface							-
Communication							
Prepared for connection of a communications module (ready4COM feature)	Status messages of the circuit breaker	☐					-
	Status messages of the ETU600 electronic trip unit	☐					☐
	Remote operation, requires a communications module, closing coil, shunt trip	☐					-
Communications module		☐	☐	☐	☐	☐	
Digital input and output on the ETU600 electronic trip unit							
Parameterizable input	For activating Maintenance mode DAS+ or can be used for parameter set changeover						☐
Parameterizable output	Usable as "life contact", early trip contact, and for displaying "Parameter set B active" or "Maintenance mode DAS+ active"						-

¹⁾ A country-specific radio license is required to operate the Bluetooth interface. Before activating the Bluetooth function, ensure that the license is available: www.siemens.com/lowvoltage/certificates

- Not available
Available, feature of the application
Can be retrofitted

3WA Power Circuit Breaker - Selection & Application Guide

ETU600		Current metering	ready4COM	PMF-I Energy efficiency	PMF-II Power Monitoring	PMF-III Advanced Power Monitoring
Metering function						
Integrated voltage tap at top/bottom		-	-			
Voltage tap module VTM		-	-			
Type acc. to IEC 61557-12		PMF-I	-	-		
		PMF-II	-	-	-	
		PMF-III	-	-	-	-
Metering values						
Temperature		-				
Accuracy according to IEC 61557-12						
Phase current I_{L1}, I_{L2}, I_{L3}						
Neutral conductor current I_N						
Voltage U_{LN}		-	-			
Voltage U_{LL}		-	-			
Active energy E_a		-	-			
Active power P		-	-	-		
Accuracy according to manufacturer's specifications						
Ground-fault current I_g with ETU600 LSI		-	-	-		
Ground-fault current I_g with ETU600 LSIG, ETU600 LSIG Hi-Z		-	-	-		
Reactive energy E_r		-	-	-		
Apparent energy E_{ap}		-	-	-		
Reactive power Q		-	-	-		
Apparent power S		-	-	-		
Power factor PF		-	-	-		
$\cos \varphi$		-	-	-		
Frequency f		-	-	-		
Current unbalance		-	-	-		
Voltage unbalance		-	-	-		
Total harmonic distortion THD-I ¹⁾		-	-	-	-	
Total harmonic distortion THD-U ¹⁾		-	-	-	-	
Harmonic I, U ¹⁾		-	-	-	-	

¹⁾ For 2nd to 15th harmonic $\pm 2\%$ and for 16th to 31st harmonic $\pm 5\%$

Available, feature of the application package
 - Not available

Licenses for activating the test function in SENTRON Powerconfig software

License (ALM)	Test scope	Test values can be set	Documentation	Article No.
Basic (unlimited)	LSIG	No	No	Free available
Standard (365 days)	LSIG	Yes	Yes	7KN2720-OCE00-1YC1
Extended new (365 days)	LSIG dST Phase unbalance current Phase unbalance voltage Total harmonic distortion (THD) for current and voltage (from Powerconfig V3.28) Undervoltage, overvoltage Forward power Reverse power Underfrequency Overfrequency Phase sequence detection	Yes	Yes	7KN2720-OCE00-2YC1

Structure of the article numbers



Basic configuration for AC non-automatic circuit breakers, fixed-mounted, size 2

The structure shown below is intended as an overview of each position and its meaning. For a complete and valid configuration of your air circuit breaker, please use our online configurator at www.siemens.com/lowvoltage/3wa-configurator

Size	Short-circuit breaking capacity I_{cu}/I_{cs}	Max. rated current I_{nmax}	Rated conditional short-circuit current I_{cc} Communication capability AC non-automatic circuit breakers			3-pole 4-pole, N left 4-pole, N right new	Connection fixed-mounted												
			8	9	10		11	12	13	14	15	16	17						
Up to 690 V																			
2 S	66/50 kA at 500 V/690 V	2000 A	3WA1220	3	A	A	0	1	2	1	2	3	5	6	0	A	A	0	Z...
	2500 A	3WA1225	3	A	A	0	1	2	1	2	3	5	6	0	A	A	0	Z...	
	3200 A	3WA1232	3	A	A	0	1	2	1	2	3	5	6	0	A	A	0	Z...	
	4000 A	3WA1240	3	A	A	0	1	2	1	2	5	6	0	A	A	0	Z...		
2 M	85/66 kA at 500 V/690 V	2000 A	3WA1220	4	A	A	0	1	2	1	2	3	5	6	0	A	A	0	Z...
	2500 A	3WA1225	4	A	A	0	1	2	1	2	3	5	6	0	A	A	0	Z...	
	3200 A	3WA1232	4	A	A	0	1	2	1	2	3	5	6	0	A	A	0	Z...	
	4000 A	3WA1240	4	A	A	0	1	2	1	2	5	6	0	A	A	0	Z...		
2 H	100/85 kA at 500 V/690 V	2000 A	3WA1220	5	A	A	0	1	2	1	2	3	5	6	0	A	A	0	Z...
	2500 A	3WA1225	5	A	A	0	1	2	1	2	3	5	6	0	A	A	0	Z...	
	3200 A	3WA1232	5	A	A	0	1	2	1	2	3	5	6	0	A	A	0	Z...	
	4000 A	3WA1240	5	A	A	0	1	2	1	2	5	6	0	A	A	0	Z...		
2 C	130/100 kA at 500 V/690 V	2000 A	3WA1220	6	A	A	0	1	2	1	2	5	6	0	A	A	0	Z...	
	2500 A	3WA1225	6	A	A	0	1	2	1	2	5	6	0	A	A	0	Z...		
	3200 A	3WA1232	6	A	A	0	1	2	1	2	5	6	0	A	A	0	Z...		
For higher voltages and in the 690-V IT system																			
2 E	85/50/50/70 kA at 690 V/690-V IT system/1000 V/1150 V	2000 A	3WA1220	8	A	A	0	1	2	1	2	3	5	6	0	A	A	0	Z...
	2500 A	3WA1225	8	A	A	0	1	2	1	2	3	5	6	0	A	A	0	Z...	
	3200 A	3WA1232	8	A	A	0	1	2	1	2	3	5	6	0	A	A	0	Z...	
	4000 A	3WA1240	8	A	A	0	1	2	1	2	5	6	0	A	A	0	Z...		

Non-automatic circuit breakers with and without ready4COM, from page 1/35 onwards Operating mechanism, auxiliary switch and auxiliary release, from page 1/36 onwards

Power Distribution and Protection (Available in NEMA 1 or NEMA 3R)



Power Forge PFG Switchboard Rated 400A - 800A

Designed for commercial and light industrial distribution centers.

- UL 891 listed
- Main breaker or main lug configurations
- Front-access, wall-mounted or free-standing options
- Engineered to meet all EUSERC and NEC standards

Power Forge PFG Switchboard Rated 1000A - 1600A

Heavy-duty construction for mid-size commercial and industrial facilities.

- UL 891 listed
- Integrated metering
- Surge protection
- Options to add feeder breakers
- Engineered to meet all EUSERC and NEC standards

Remote Power Panels (RPP)



Power Maxx PMX Switchboard Rated 2000A - 4000A

Built for large commercial, utility, and industrial applications.

- UL 891 listed
- Integrated metering
- Surge protection
- Options to add feeder breakers
- Engineered to meet all EUSERC and NEC standards



225A - 1200A Remote Power Panel

Ideal for data centers, telecom, and critical power environments.

- UL listed branch circuit distribution panels
- 208Y/120V, 480Y/277V, 415/240V, 600V configurations available
- Integrated panelboards with monitoring and metering options
- Compact footprint for efficient white space deployment



Where precision meets power.

Stay connected with us on social media for the latest updates on products and support.

@deipowersolutions



4725 Troy Ct.
Jurupa Valley, CA 92509
deipowersolutions.com
(866) 773-8050

© 2025 DEI Power Inc.
All Rights Reserved.